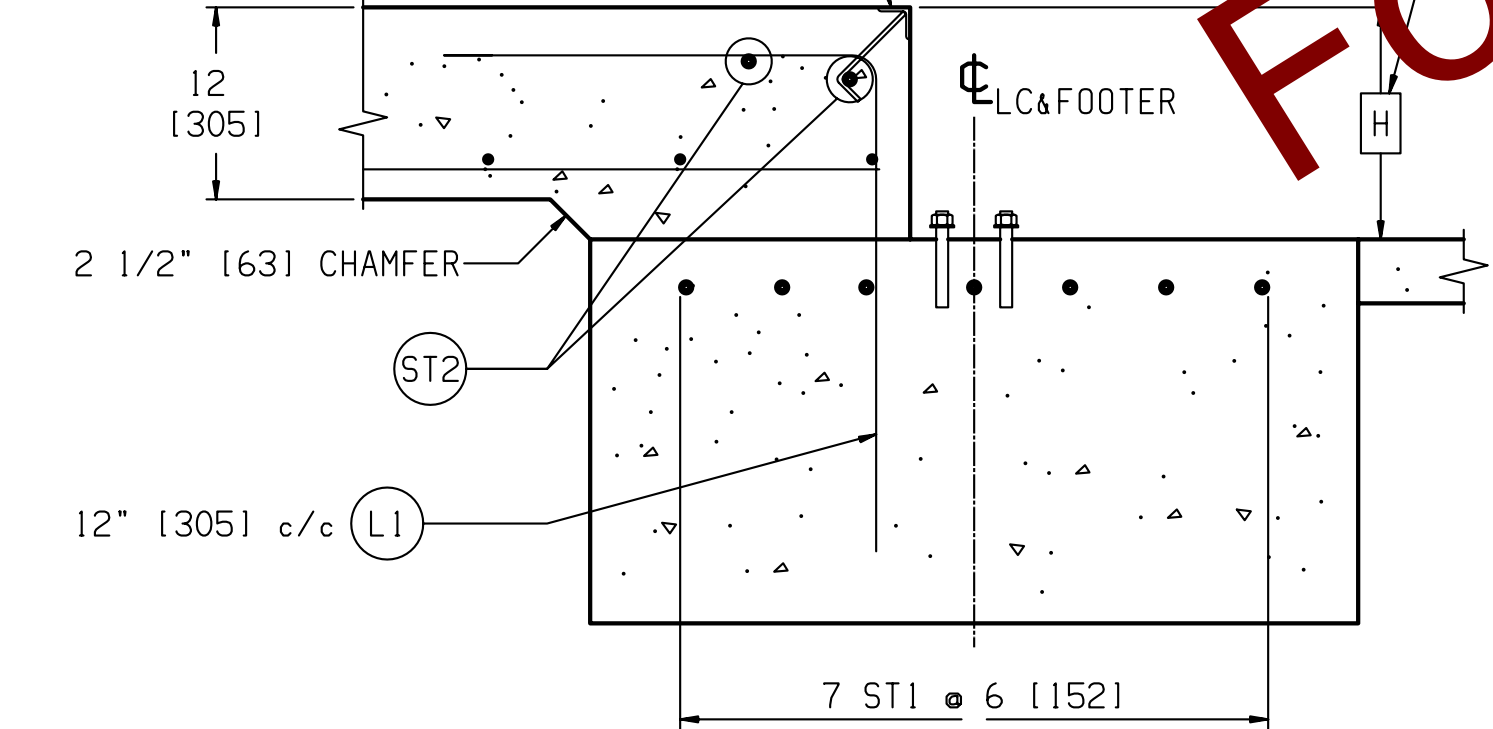
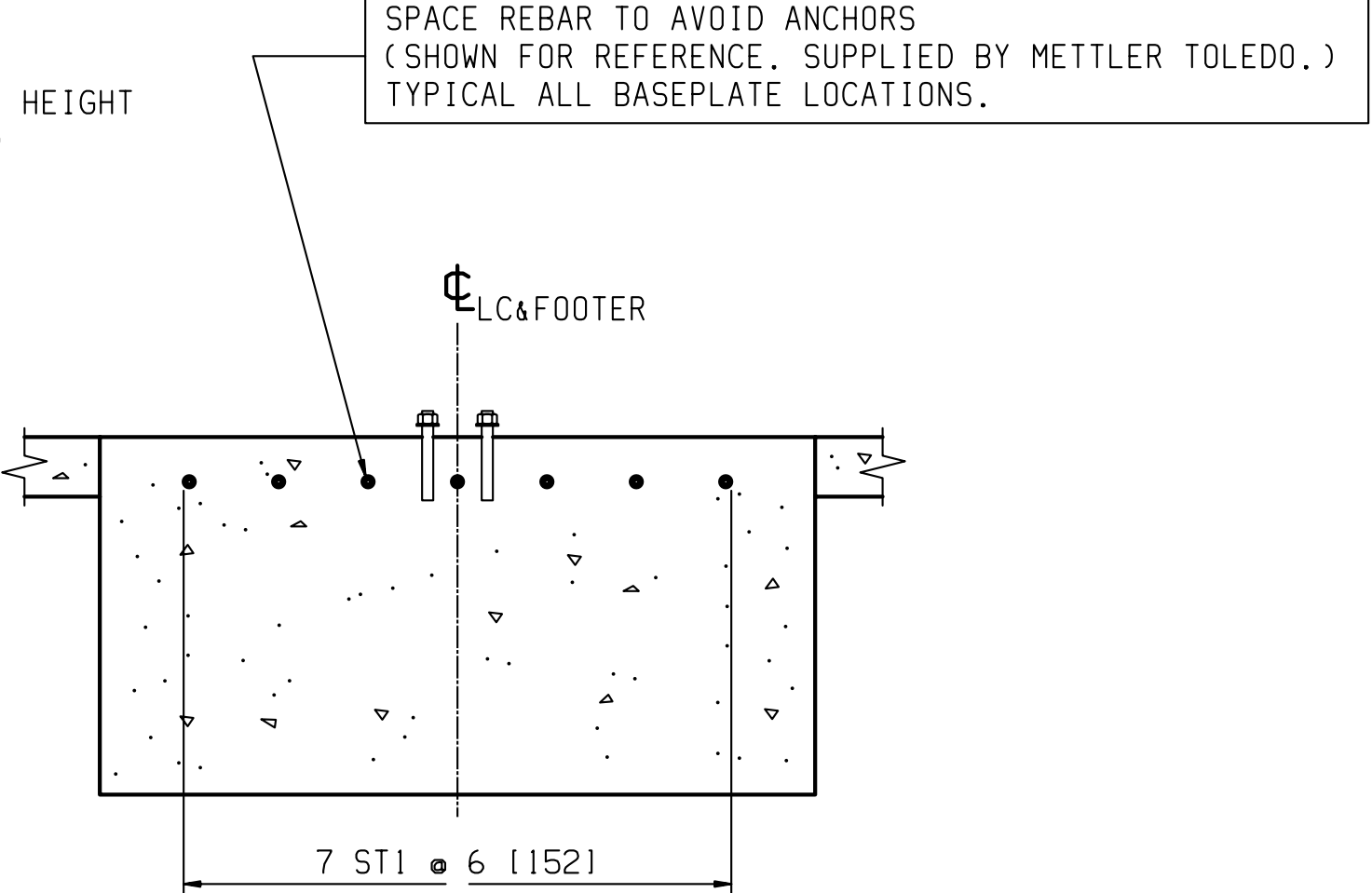


ANGLE 2 X 2 X 1/4 WITH ANCHOR HOOKS
[51x51x6.35]
(REF BUMPER PLATES) ON 12" c/c. [305]



SECTION C-C
SCALE 1/12
(TYPICAL END WALL)



SECTION D-D
SCALE 1/12
(TYPICAL FOOTER)
SINGLE BASEPLATE

REINFORCING STEEL SCHEDULE (A.S.T.M. A-615 GRADE 60 [420 MPa] OR EQUIVALENT)						
COLD FORM BARS TO INSIDE DIMENSIONS			A			
SYM	QTY	SIZE	LOCATION, DIRECTION	A	B	WEIGHT
ST1	35	#6 [19]	FOOTERS, LATERAL	10'-0 [3048]		526 LB [239 Kg]
ST2	4	#5 [16]	ENDS, LATERAL	10'-0 [3048]		42 LB [19 Kg]
	20		APPROACHES, LATERAL			209 LB [95 Kg]
ST3	22	#5 [16]	APPROACHES, LONG.	9'-6 [2896]		238 LB [108 Kg]
L1	22	#5 [16]	APPROACH TO END TIES	2'-3 [686]	2'-7 [787]	111 LB [50 Kg]

L1 IS GIVEN WITHOUT RISER BASEPLATES.
DIMENSION "B" AND WEIGHT WILL VARY WITH
THE HEIGHT OF RISERS USED, AS FOLLOWS:

	L1-B	WGT
NO RISERS	2'-7 [787]	111 [50 Kg]
3" [76mm] RISERS	2'-10 [664]	117 [53 Kg]
6" [152mm] RISERS	3'-1 [940]	123 [56 Kg]

MATERIAL SUMMARY (INCLUDES FOOTERS & APPROACHES) (DOES NOT INCLUDE SCALE DECK) (ASSUMES NO RISER BASEPLATES)	* FOOTER DEPTH: "X" IN [mm] (24 INCH [610mm] MINIMUM)				
	24 [610]	36 [914]	48 [1219]	60 [1524]	72 [1829]
CONCRETE (YD [m]) ³	24 [18.4]	31.5 [24.1]	39.5 [30.2]	47 [35.9]	55 [42.0]
REINFORCING STEEL (LBS [kg])	1106 [502]				

* IF OPTIONAL WASHOUT SLABS ARE USED, ADD:
675 SQ. FT. OF WWF: 6x6-W1.4xW1.4
[63 m²] OF WWF: 152x152-MW9.1xW9.1
8.5 (YD [m])³ OF CONCRETE.

NOTES:

- FOUNDATION REQUIRES MINIMUM 3000 PSI [20.7 MPa] STRENGTH CONCRETE AT 28 DAYS WITH 5-7% AIR ENTRAINMENT. SPECIFICATIONS FOR SCALE DECK CONCRETE IS FOUND ON CORRESPONDING GENERAL LAYOUT DRAWING.
- USE MINIMUM 60 KSI [420 MPa] YIELD DEFORMED REINFORCING STEEL. REBAR MINIMUM DEPTH OF COVER SHOULD BE IN ACCORDANCE WITH THE LATEST ACI BUILDING CODE REQUIREMENTS FOR STRUCTURAL CONCRETE (ACI 318-SECTION 7.7) UNLESS OTHERWISE SPECIFIED.
- FOUNDATION REQUIRES 2500 PSF [119.7 kPa] RATED SOIL FOR HIGHWAY TRUCK APPLICATIONS.
- TOP OF CONCRETE AT BASEPLATE LOCATIONS TO BE LEVEL AND IN ONE PLANE ±1/8" [3.2 mm].
- DIAGONAL MEASUREMENTS ENDWALL MUST BE EQUAL WITHIN 1/2" [12.7 mm].
- BASEPLATE ANCHORS TO BE SUPPLIED BY METTLER-TOLEDO. USE BASEPLATES AS TEMPLATES TO LOCATE ANCHORS DURING SCALE INSTALLATION.
- RAMP LENGTH: -PER LOCAL REGULATIONS
-1/2" SLOPE PER FOOT [42mm SLOPE PER METER] TYPICAL
- BOTTOM OF FOOTER MUST BE BELOW LOCAL FROSTLINE.
- WASHOUT SLABS (PREFERRED) OR SOIL NEED TO BE FLUSH WITH THE TOP OF THE FOOTERS FOR PROPER PLACEMENT OF CONCRETE IN MODULES.
- TOP OF FOOTER AT GRADE LEVEL, i.e. FLUSH WITH WASHOUT SLABS, PROVIDES STANDARD 3.25" [82mm] CLEARANCE BETWEEN BOTTOM OF WEIGHBRIDGE AND WASHOUT SLABS WHEN LOAD CELLS ARE INSTALLED.
- OPTIONAL: 6" [150mm] OF GRAVEL MAY BE USED UNDER APPROACHES TO IMPROVE DRAINAGE.
- CONTRACTOR SUPPLIES:
 - EXCAVATION
 - REINFORCING STEEL
 - CURB ANGLE ASSEMBLIES (SECT C-C)
 - CONCRETE AND FORMS
 - 1 1/2" [41] DIA CONDUIT
 - BUMPER PLATE ASSEMBLIES (VIEWS J-J & N-N)

DRAWING IS TO SCALE ONLY WHEN BORDER MEASURES 22-7/8" X 35" (FULL SIZE)

REV	CHANGE	BY	DATE	SCALE .02	METTLER TOLEDO
				DATE 04/15/14	
				DRN KRS APPDCMD	
				TITLE	
				VTC191 FND VF 80x10 W/RSR	
				UNLESS OTHERWISE SPECIFIED, ALL DIMENSIONS ARE IN INCHES, AND DIMENSIONAL TOLERANCES ARE:	THIS PRINT IS FURNISHED WITH THE UNDERSTANDING THAT THE ESSENCE THEREOF WILL NOT BE REPRODUCED IN WHOLE OR IN PART WITHOUT WRITTEN AUTHORIZATION OF METTLER-TOLEDO, LLC. ALL DESIGNS ARE THE PROPERTY OF METTLER-TOLEDO, LLC AND WILL BE PROTECTED BY PATENTS.
				FRACTIONAL .XX ±.02 .XXX ±.005	
				DECIMAL .XX ±.02 .XXX ±.005	
				ANGULAR ±.5°	
					61808535
					REV